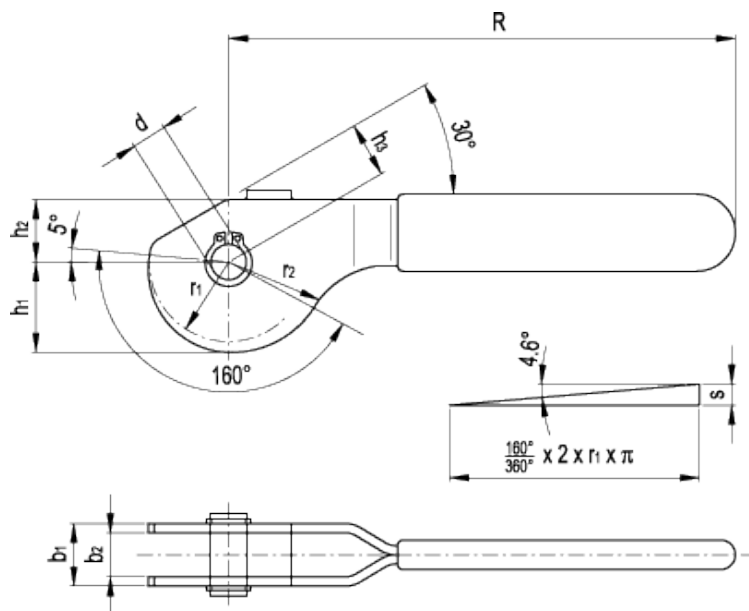


GN 917

Double cam levers



technical informations

Body

Black-oxide steel, ST52-3.

King pin

Tempered AISI 420 stainless steel.

Circlip

AISI 301 stainless steel.

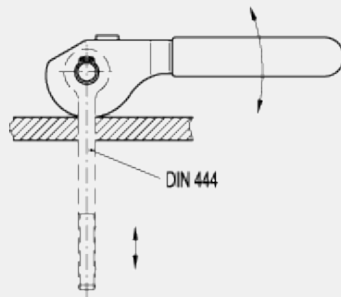
Plastic handle sleeve

Red colour, oil resistant. Max. working temperature 60°C.

Features and applications

GN 917 are used for repositioning and clamping operations. The eccentric cam is designed in such a way that the clamping force remains constant in every position of its action. It is self-locking. The dimension b_2 is made to match the head size of swing bolts DIN 444.

Application example



Standard Elements	Main dimensions											Weight
Description	d	b ₁	b ₂	h ₁	h ₂	h ₃	R	r ₁	r ₂	s	r2 - h3	g
GN 917-8-13	8	13	9	19.54	14	12	114	17.2	21.07	3.87	9.07	85
GN 917-10-17	10	17	12	24.54	17	15	138	21.6	26.45	4.85	11.45	170
GN 917-12-20	12	20	14	31.81	21	18	157	28	34.29	6.29	16.29	273



STANDARD MACHINE ELEMENTS WORLDWIDE